

Narrows Series

PORTAFERRY SAILING CLUB

38 – 40 Shore Road, Portaferry, BT22 1JZ

TEL:028 4272 8770 EMAIL:mail@portaferrysailingclub.com

www.portaferrysailingclub.com

Regatta

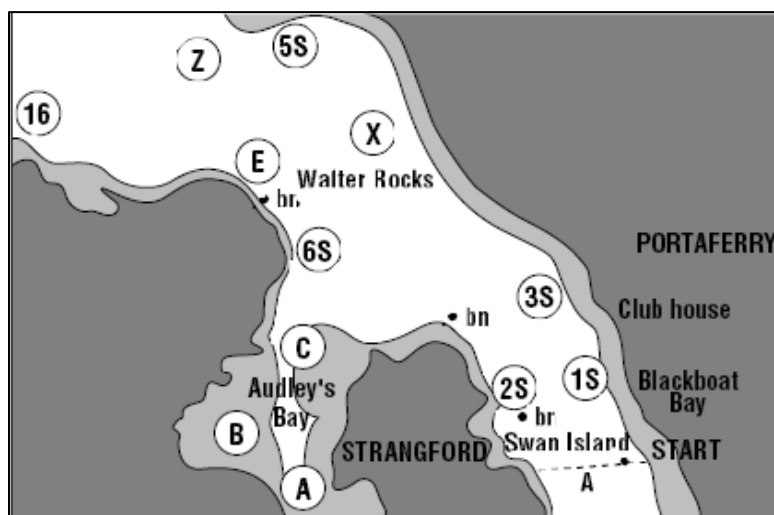
SUNDAY 17th JULY 2011

FIRST RACE 13 00 hrs

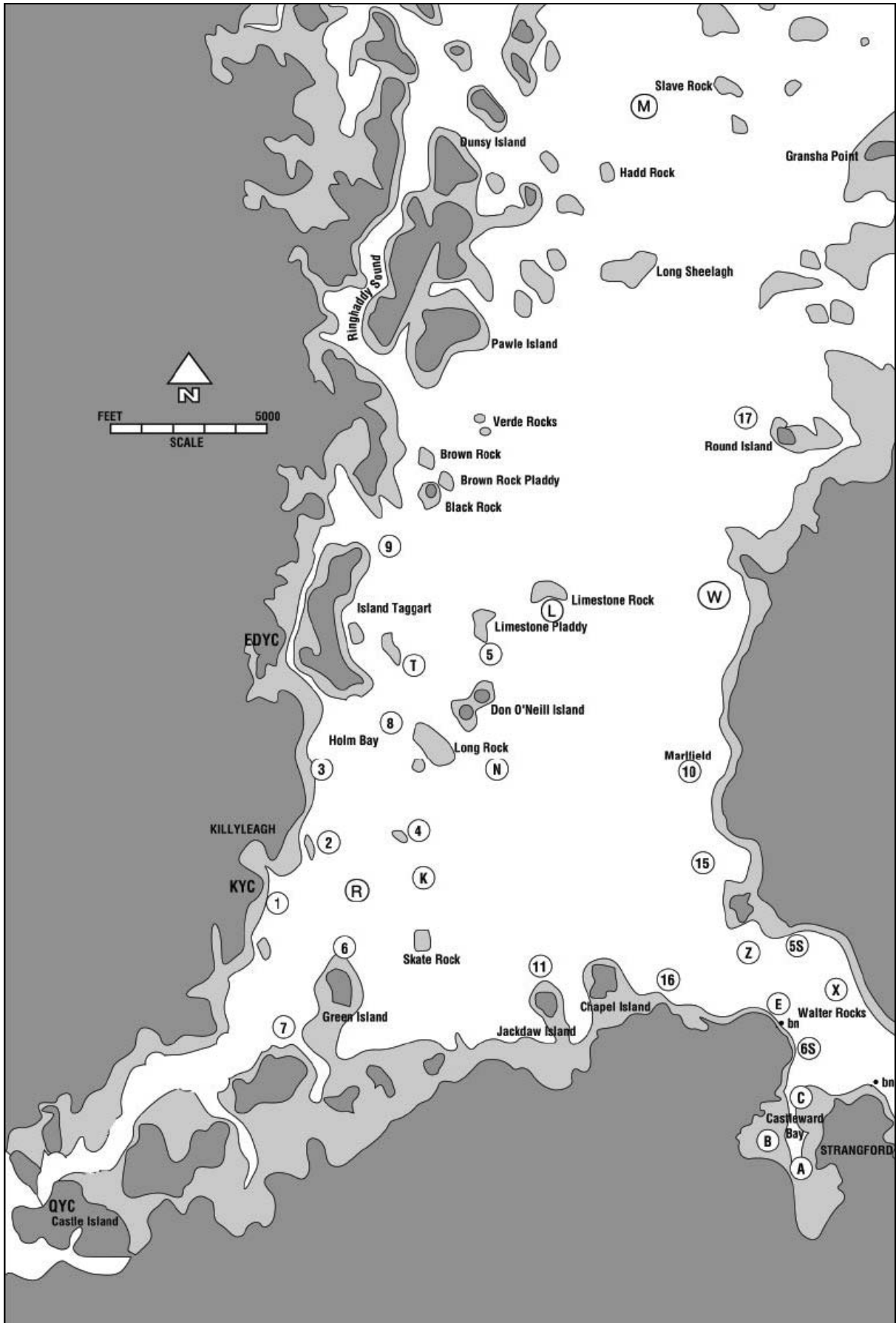
Supported by Ards Borough Council & Down District Council

RACE PROGRAMME AND CLASS CODE FLAGS				
Race No	Start Time	Class	Code Flag	Course
1	13 00	Cruiser IRC 0.950 & over	Numeral 1	A
2	13 05	Cruiser PYS 1030 & under	Numeral 4	B
3	13 05	Cruiser IRC 0.949 & under	Numeral 2	B
4	13 10	Flying Fifteen	A	C
5	13 15	Cruiser PYS 1031 & Over	Numeral 5	C
6	13 20	Cruiser Restricted Sail PYS 1045 & under	Numeral 7	C
7	13 25	Sonata	Numeral 6	C
8	13 30	River	R	C
9	13 35	Glen	G	C
10	13 40	Cruiser Restricted Sail PYS 1046 & Over	Numeral 3	D
11	13 45	Lightning	D	D
12	13 50	Squib	E	D
13	13 55	Dinghy H/Cap PYS 1130 & under	J	E
14	14 00	Dinghy H/Cap PYS 1131 & over	V	E
15	14 05	Laser 4.7, Topper, Mirror, Optimist	O	F

High Water Portaferry 15 07 hours



If ferry course Marks 5s and 6s are used they must only be included in the first round



Regatta Racing Instructions

COMPETITORS

Competitors with IRC and PY handicaps are advised to notify the committee boat of their handicap before the start.

START ALL RACES (Except Race 15)

Black Boat Bay. Continuation of a line marked A from two flagpoles on shore and inside a limit mark which may or may not be on the line. Cross south to north. Stay outside of inner limit. Competitors in Race 17 will start and finish at Mark C in Castle Ward Bay where their course will be displayed.

FINISH ALL RACES (Except Race 15)

A line between a flagpole outside PSC clubhouse and an outer limit mark. Cross North to South and stay outside of inner limit mark. (Yellow Speed Limit Buoy).

COURSE	RACE NUMBER
Course A	1
Course B	2-3
Course C	4-9
Course D	10 - 12
Course E	13-14
Course F	15 start and finish Castle Ward Bay

DISPLAY AT START OF ALL RACES

Red Numbers – Marks to port

Green Numbers – Marks to starboard

Black Numbers on White Background – Rounds to be sailed

All boats must keep to the west of Walter Rock and Ballyhenry wrecks

TIME LIMIT

Any yacht failing to finish by 16 30 hours will be deemed to have retired.

SHORTENING COURSE

By attaching a second buoy marked 'S' to any marks on the course. Yachts should return to finish from this mark.

PRIZES

The winning boat in each class will receive a trophy in the clubhouse after racing. Overall prizes for the Narrows Series will be presented after racing on the 17th.

REFRESHMENTS / ENTERTAINMENT

Available after racing at the Clubhouse as usual. You are very welcome and we hope you will give us your support. You are warmly invited to join us for live musical entertainment in the evening (dancing and late bar).